

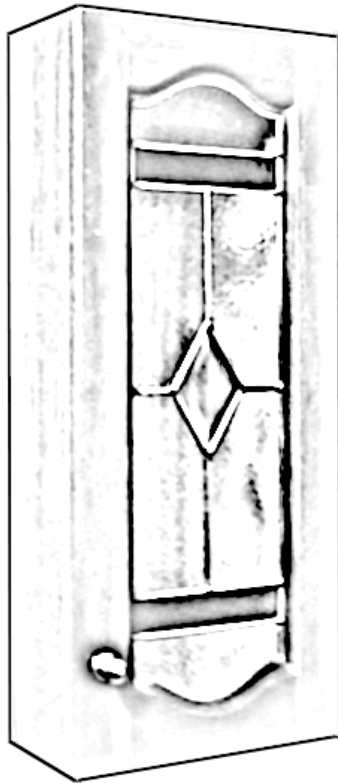
# SHAVING CABINET

**Cabinet:**

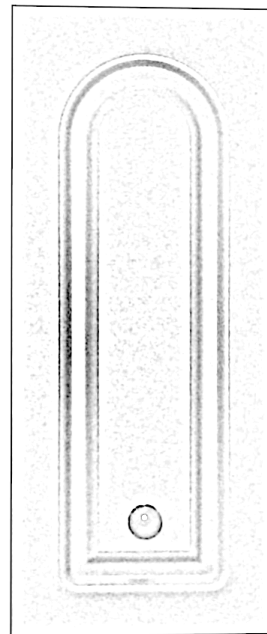
- Cabinet finish same as vanity
- Metal hinges
- 2 Adjustable shelves in cabinets
- Knobs, Handles, or finger pulls as on vanity
- Cabinet door designs same as used on vanity
- Colours - to match vanity

**Sizes:**

720x300 single door unit left or right hand hinged



Illustrated as Federation shaving cabinet 720x300  
(see Federation cabinet sizes for more details)



Illustrated as Regent720x300  
see Regent cabinet sizes for more details)