

## EXECUTIVE

---

### **Cabinet:**

Moisture resistant timber grain melamine board  
Cabinet colour - Blackwood or Jarrah  
Cabinet height - 840mm, (plus top) or 860mm for semi recessed  
Cabinet availability - see specification on following page  
Knobs / backplates  
Shelf  
Cosmetic tray  
Metal door hinges  
Metal drawer runners  
Timber doors @ 558mm high  
Timber drawers in a bank of 3 @ 184mm high  
Solid timber raised centre panel in splash  
Doors, Drawers & Splash panel finished in clear lacquer  
Tudor Arch on top and bottom of doors & drawer set with pencil round on edges

### **Top:**

Available colours - White or Ivory

### **Optional extras (at extra charge) for these tops:**

Amastone top - Charcoal, Ivory Sand, Palamino Grey, Aqua Jade or Bermuda Blue

Legs - Straight Round, Straight Square or Curved



Pictured is a 610 x 350 1door 3drawer Executive with optional legs

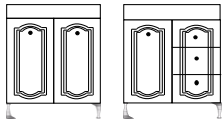
## EXECUTIVE

TOP SIZE	No. of Doors	No. of Drawers	Width MM	Height of Cabinet MM	Depth on Floor MM	Weight of Cabinet KG	Weight Incl. Top MM
<b>ENSUITE</b>							
610 x 310	2	0	591	840	291	21.0	29.5
610 x 310	1	3	591	840	291	21.3	29.8
610 x 350	2	0	591	840	319	21.7	30.2
610 x 350	1	3	591	840	319	22.3	34.3
760 x 350	1	3	740	840	319	30.1	43.1
910 x 350	2	0	887	840	319	29.0	46.0
910 x 350	2	3	887	840	319	33.7	50.7
<b>OVAL (Single centre bowl)</b>							
610 x 470	2	0	591	840	426	25.2	39.2
610 x 470	1	3	591	840	426	30.5	44.5
760 x 470	1	3	740	840	426	34.4	48.4
910 x 470	2	0	887	840	426	33.4	49.4
910 x 470	2	3	887	840	426	38.4	54.4
1215 x 470	2	3	1185	840	426	46.5	68.5
1215 x 470	2	6	1185	840	426	48.2	70.2
1215 x 470	3	3	1185	840	426	49.4	71.4
1500 x 470	2	6	1481	840	426	59.7	89.7
1800 x 470	4	0	1774	840	426	64.3	101.3
1800 x 470	4	6	1774	840	426	71.0	108.0
<b>OVAL (Double bowl)</b>							
1500 x 470	2	6	Uses 1500 x 470 Cabinet				90.7
1800 x 470	4	6	Uses 1800 x 470 Cabinet				107.5
<b>VOGUE</b>							
910 x 470	2	0	Uses 910 x 470 Cabinet				52.8
910 x 470	2	3	Uses 910 x 470 Cabinet				57.8
1215 x 470	2	3	Uses 1215 x 470 Cabinet				71.8
1215 x 470	3	3	Uses 1215 x 470 Cabinet				74.7
1215 x 470	2	6	Uses 1215 x 470 Cabinet				73.5
<b>BANJO</b>							
1550 x 470 (L/R)	1	3	Uses 760 x 470 Cabinet				59.4
1910 x 470 (L/R)	2	0	Uses 910 x 470 Cabinet				63.9
1910 x 470 (L/R)	2	3	Uses 910 x 470 Cabinet				68.9
<b>CORNER UNIT</b>							
610 x 610	1	0	528	840	213	24.6	38.1
900 x 900	3	0	296+528+296	840	213	43.2	64.7
900 x 900	2	3	296+528+296	840	213	47.3	68.8
900 x 900	1	6	296+528+296	840	213	51.4	72.9
915 x 615 (L/R)	2	0	528+296	840	213	47.3	64.3
915 x 615 (L/R)	1	3	528+296	840	213	47.3	64.3
<b>SEMI RECESSED</b>							
<i>(Single centre bowl)</i>							
610 x 290	2	0	591	860	260	20.0	33.0
610 x 290	1	3	591	860	260	25.2	38.2
760 x 290	1	3	740	860	260	28.7	43.7
910 x 290	2	0	887	860	260	26.9	44.9
910 x 290	2	3	887	860	260	32.2	50.2
1215 x 290	2	3	1185	860	260	39.5	59.5
1215 x 290	2	6	1185	860	260	40.4	60.4
1215 x 290	3	3	1185	860	260	41.1	61.1
1500 x 290	2	6	1481	860	260	51.0	74.0
1800 x 290	4	0	1774	860	260	56.3	82.8
1800 x 290	4	6	1774	860	260	56.8	83.3
<b>SEMI RECESSED</b>							
<i>(Double bowl)</i>							
1500 x 290	2	6	Uses 1500 x 290 Cabinet				66.8
1800 x 290	4	0	Uses 1800 x 290 Cabinet				82.8
1800 x 290	4	6	Uses 1800 x 290 Cabinet				83.3
<b>SHAVING CABINET</b>							
720 x 300	1	0	300	720	150	9.4	-

# EXECUTIVE

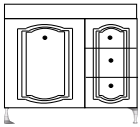
---

## Available Configurations:

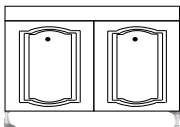


610

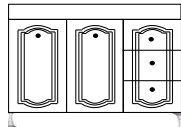
610



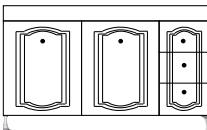
760



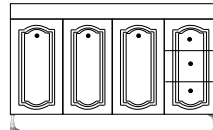
910



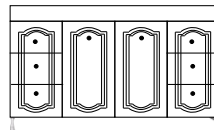
910



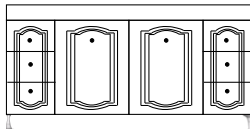
1215



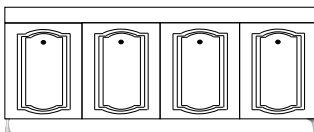
1215



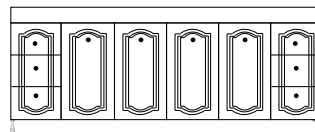
1215



1500



1800



1800